

MV "VÄSTERBOTTEN"

DWAT	6.800 mt
Built	2008 (Nyland 2009)
Length over all	119,26 m
Breadth moulded	16,50 m
Draft summer	6,28 m
Speed	12 kn
GT	5.335
NT	2.566
Gear	nil



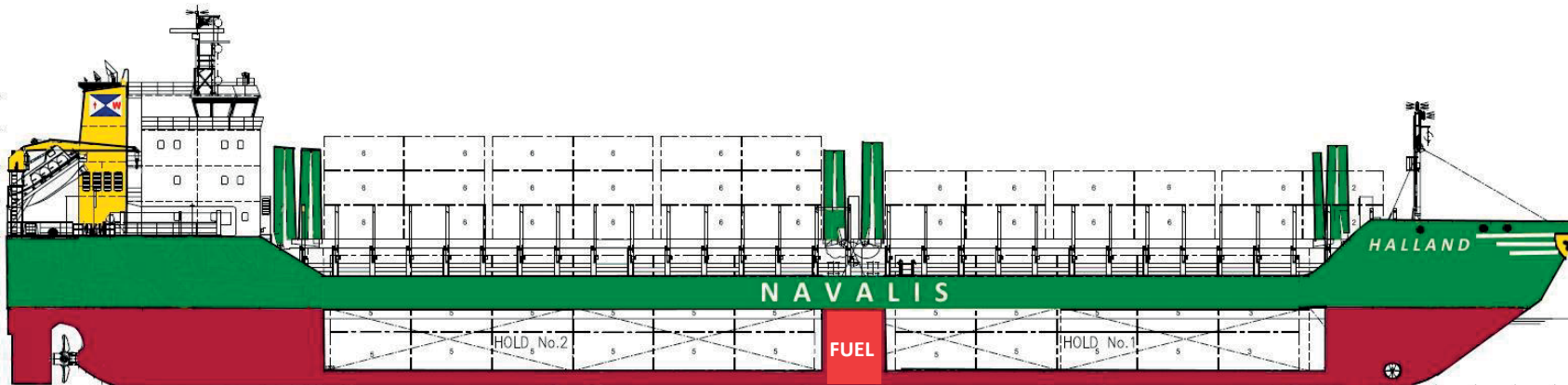
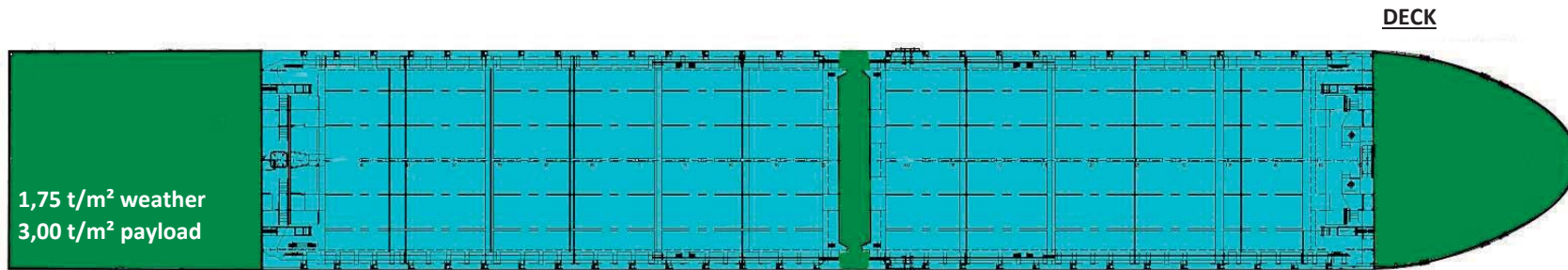
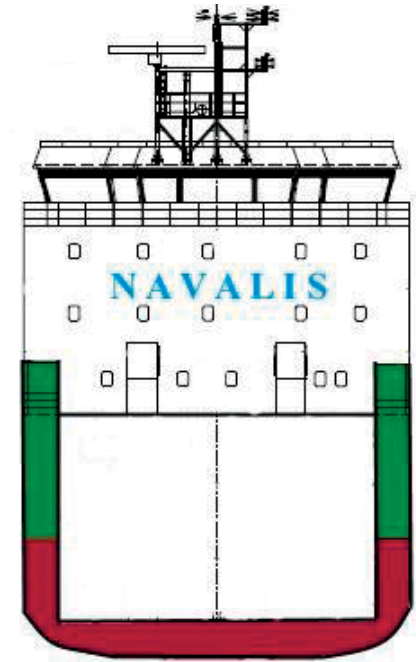
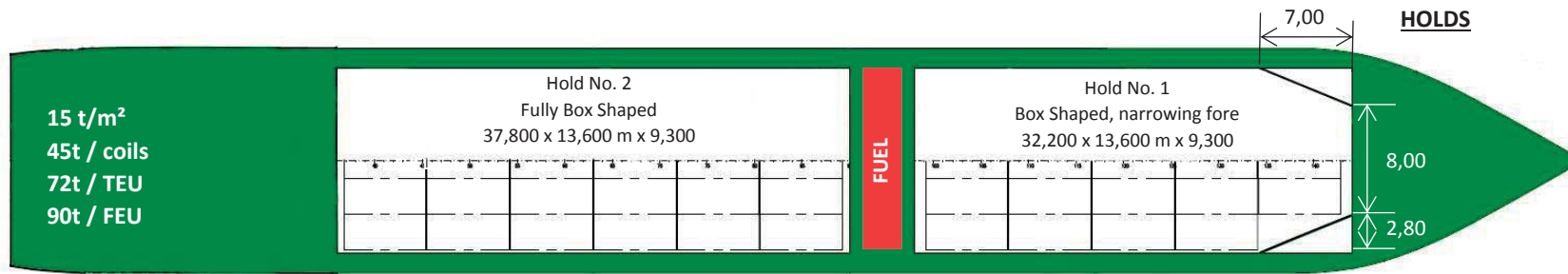
	<u>Cargohold</u>
Hatch / Hold	2 / 2
Bale	304.000 cbft

<u>Class</u>
DNV GL +100 A5 E3
G IW BWM-F + MC AUT E3
Solas II-2, Reg. 19
Multi-Purpose, Dry Cargo Vessel
Ice class E3 (Finnish 1A)

	<u>Container Capacity</u>	
Container intake	331 TEU	
14 to homogenous	299 TEU	
	<u>20' TEU</u>	<u>40' FEU + 20' TEU</u>
in hold	159 TEU	75 FEU + 9 TEU
on deck	172 TEU	78 FEU + 8 TEU
total hold + deck	331 TEU	153 FEU + 17 TEU

	<u>Container Pointload</u>
on tanktop	28 mt per TEU; 48 mt per FEU
on hatchcovers	45 mt per TEU; 60 mt per FEU

	<u>Engine</u>
Fuel Specification	ISO 8217:2010 or 2005
Main Engine	MAN 6L32/40 MCR, 3.000 kW
Auxiliary Engine	Volvo Penta D9 MG, 227 kW



Particulars	
LOA	119,26 m
LPP	114,18 m
B	16,50 m
Depth	8,30 m
D s	6,280 m
D w	6,149 m
GRT / NRT	5335 / 2566
DWT	6800 mts