

MV "ÖSTERBOTTEN"

DWAT	5.880 mt
Built	2002
Length over all	109,19 m
Breadth moulded	15,00 m
Draft summer	6,25 m
Speed	12,5 kn
GT	4.185
NT	2.168
Gear	nil


Cargohold

Hatch / Hold	2 / 2
Bale	280.000 cbft

Class

DNV GL +100 A5 E3 MC E3 AUT
 Multipurpose, Dry Cargo ship
 strengthened for heavy cargo,
 equipped for carriage of containers
 Ice class E3 (Finnish 1A)

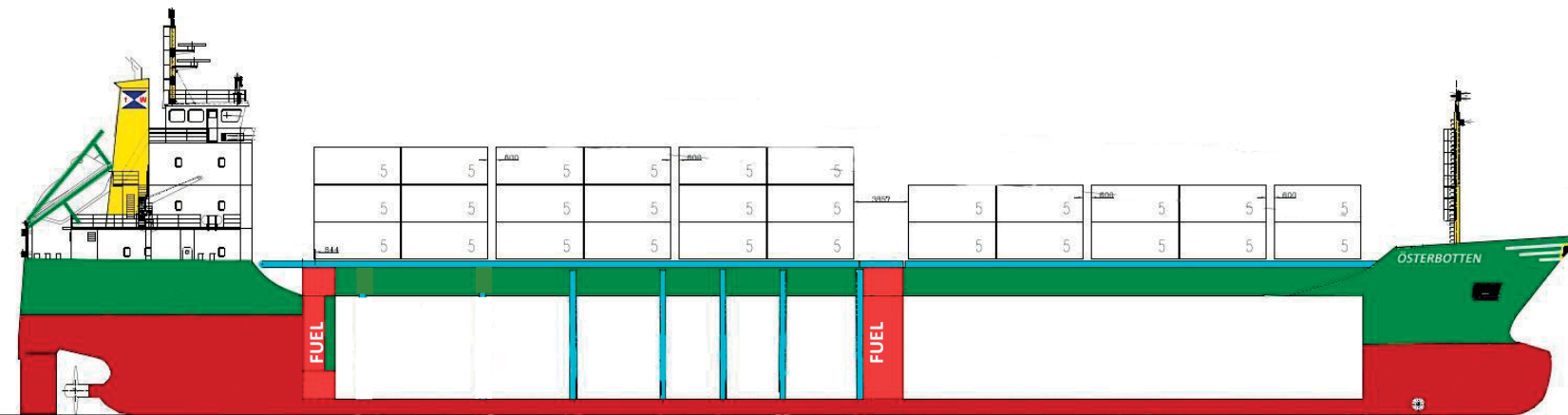
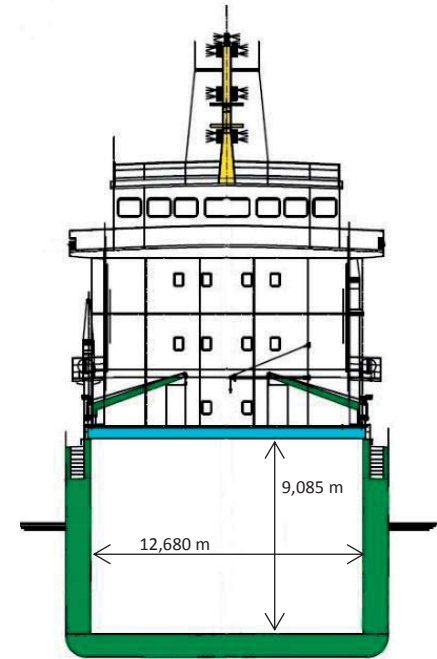
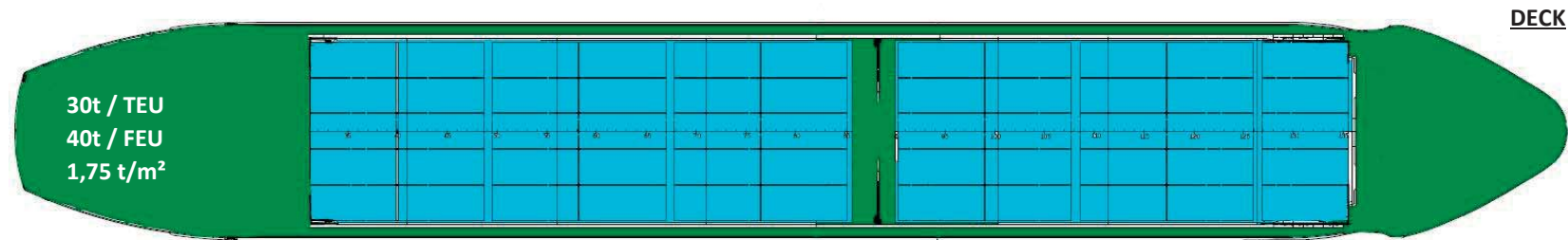
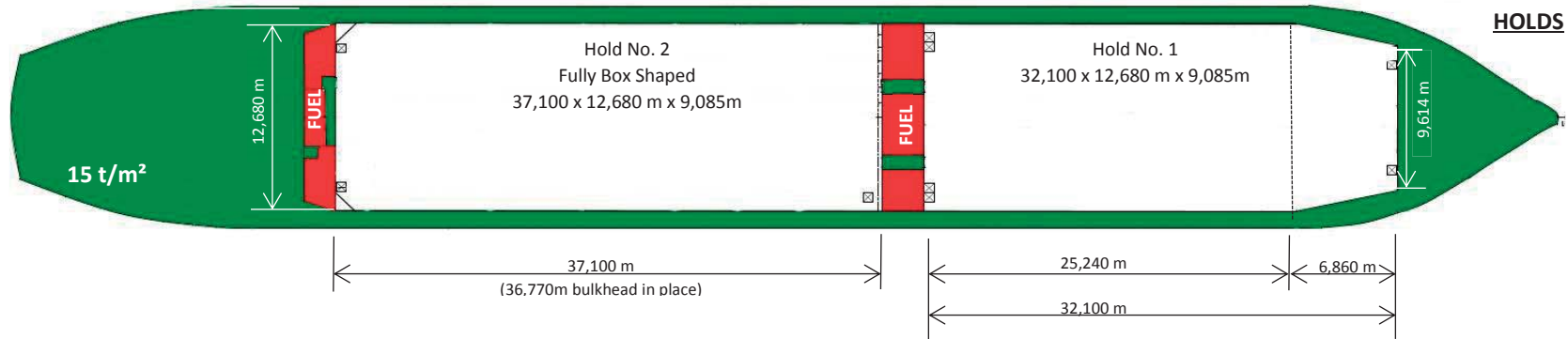
Container Capacity

Container intake	322 TEU
14 to homogenous	245 TEU

	20' TEU	40' FEU
in hold	156 TEU	60 FEU
on deck	166 TEU	78 FEU
total hold + deck	322 TEU	138 FEU

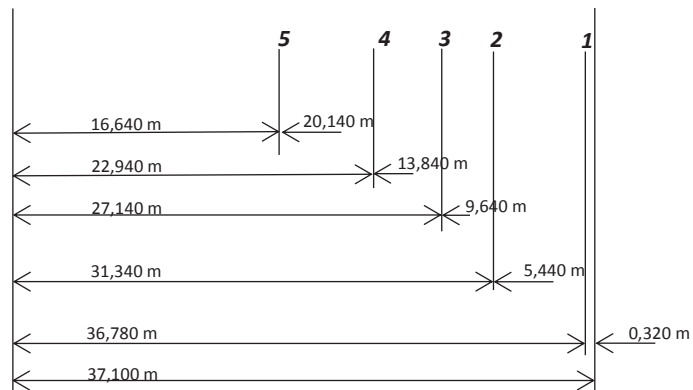
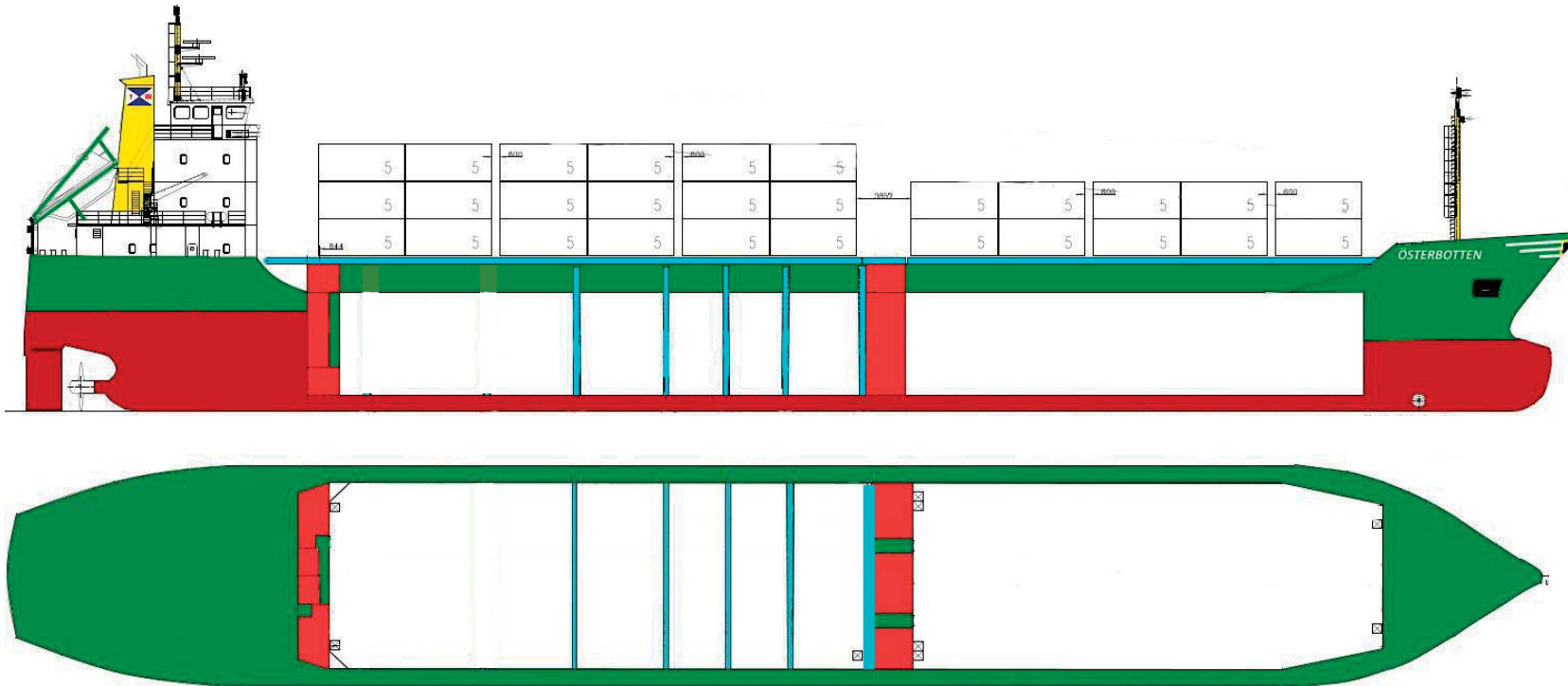
Engine

Fuel Specification	IFO 380 according ISO 8217
Main Engine	1x MaK 6M32C, 2.880 kW
Auxiliary Engine	2x Caterpillar 3306 DITA, each 412 kW



MV „ÖSTERBOTTEN“ (IMO 9247120)	
LOA	109,19 m
LPP	102,46 m
B	15,00 m
Depth	8,30 m
D s	6,190 m
D w	6,061 m
GRT / NRT	4185 / 2168
DWT	5880 mts

BULKHEAD STOWAGE



Bulkhead	Permanent @ hold no. 2
Hold No. 1 Intakes	
No bulkhead	3608 m ³
Hold No. 2 Intakes	
Pos. 1	4228 m ³
Pos. 2	622 m ³ / 3606 m ³
Pos. 3	1107 m ³ / 3122 m ³
Pos. 4	1591 m ³ / 2637 m ³
Pos. 5	2318 m ³ / 1910 m ³