

MV "LEMLAND"

DWAT	9.319 mt
Built	2009
Length over all	129,40 m
Breadth moulded	17,00 m
Draft summer	7,35 m
Speed	12 kn
GT	6.577
NT	2.881
Gear	2 x 80 mt (starboard)



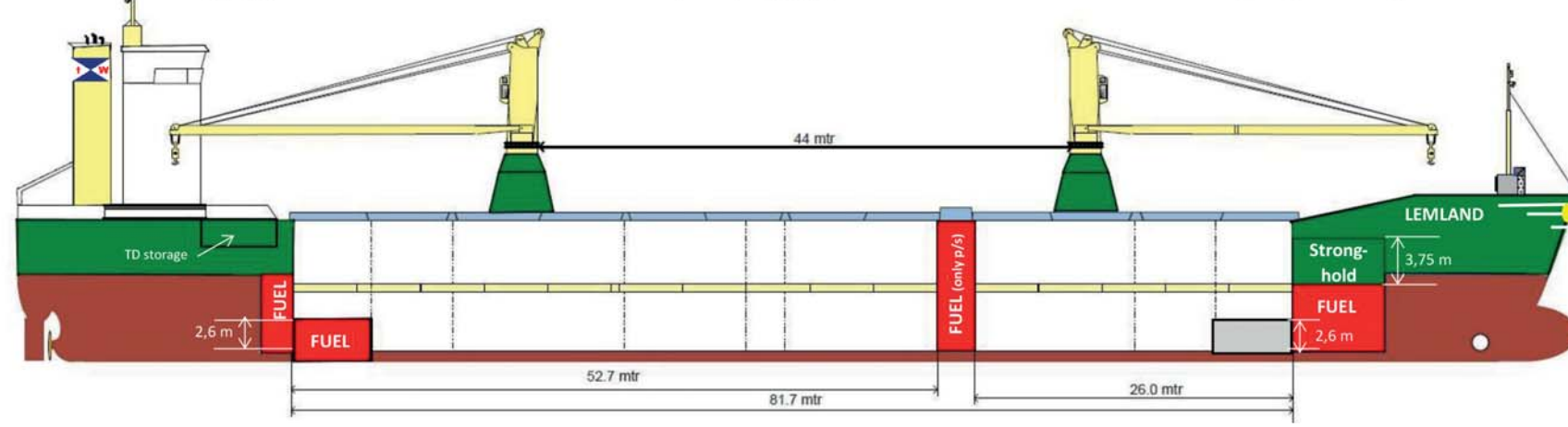
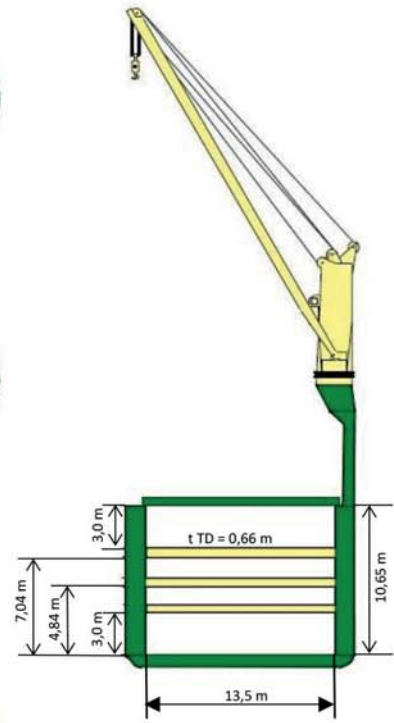
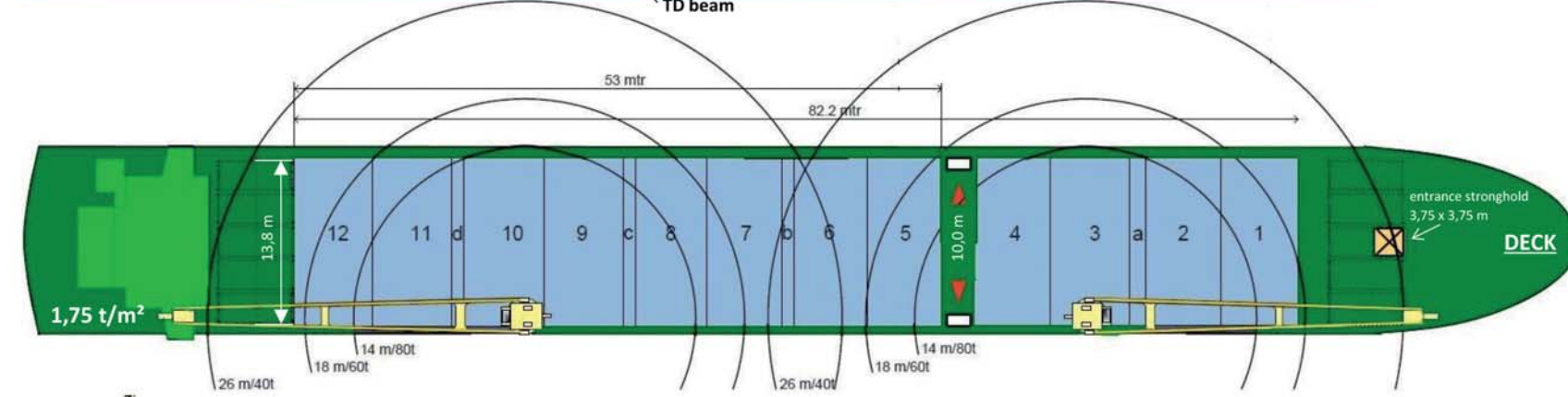
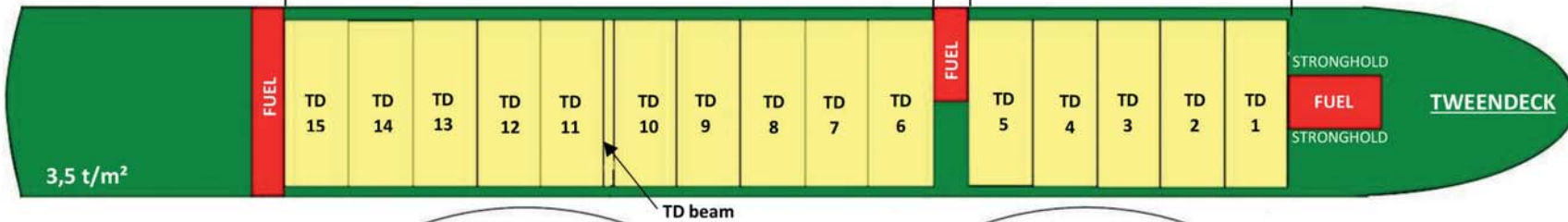
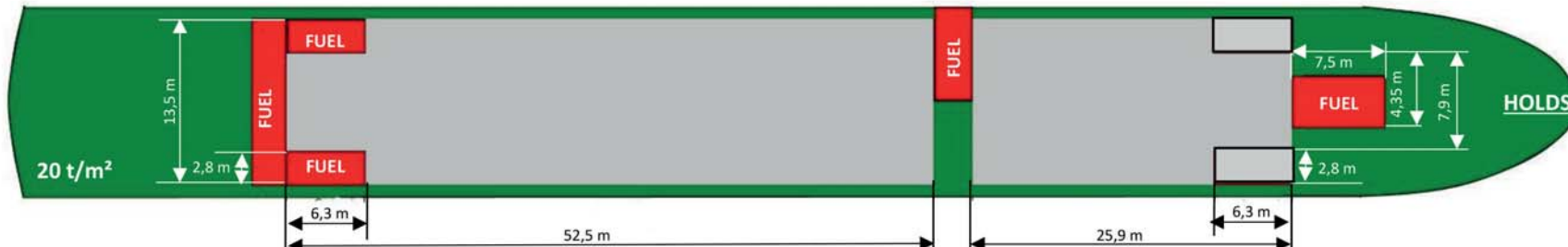
Cargohold	
Hatch / Hold	2 / 2 Pontoon hatch covers, gantry crane operated
Bale	393.494 cbft

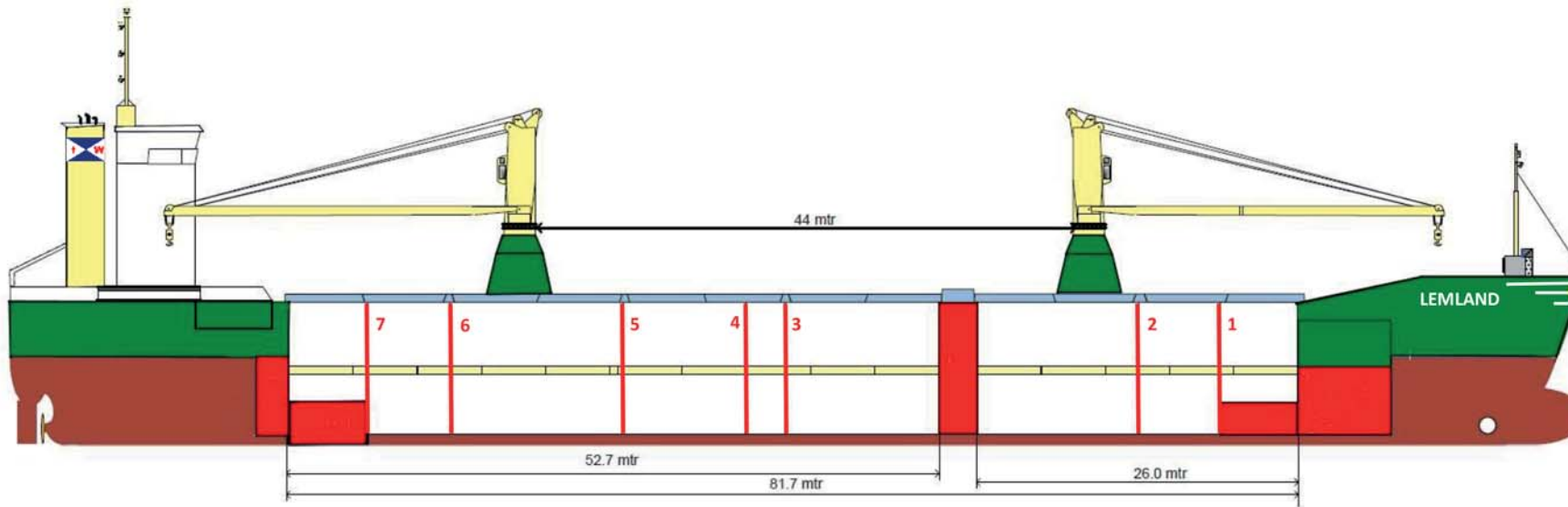
Class	
RINA I + Hull + Mach	
General cargo ship - heavycargo (tanktop, 157 kN/m2)	
Container Ship unrestricted navigation + AUT-UMS, Ice class E3 (Finnish 1A)	

all details about and not to be used for charter parties

Container Capacity		
Container intake	504 TEU	
14mts homogenous	351 TEU	
	20' TEU	40' FEU
in hold	228 TEU	116 FEU
on deck	276 TEU	115 FEU
total hold + deck	504 TEU	231 FEU

Cranes	
2 x NMF 25 mt / 18m	
Engine	
Fuel Specification	RMG 380
Main Engine	MaK 8M32C, 4.000 kW
Auxiliary Engine	3 x Mitsubishi S6B3-MPTA, 375 kW



Bulkhead Stowage

Bulkhead (one bulkhead consisting of two panels)	Panel 1 = 45,88 m ³ Panel 2 = 45,88 m ³
<i>Hold No. 1 Intakes</i>	
No Bulkhead	3648,0 m ³
Pos. 1 (fr. 136)	816,1 m ³ / 2738,8 m ³
Pos. 2 (fr. 127)	1732,7 m ³ / 1823,7 m ³
<i>Hold No. 2 Intakes</i>	
No Bulkhead	7496,0 m ³
Pos. 3 (fr. 88)	1824,5 m ³ / 5582,8 m ³
Pos. 4 (fr. 82)	2513,7 m ³ / 4893,8 m ³
Pos. 5 (fr. 70)	3749,4 m ³ / 3656,3 m ³
Pos. 6 (fr. 52)	5674,3 m ³ / 1732,7 m ³
Pos. 7 (fr. 43)	6589,3 m ³ / 817,5 m ³