

# MV FROLAND

## SISTER VESSELS: MV ROGALAND | MV HADELAND | MV OPPLAND

### MV "FROLAND"

DWAT	9.277 mt / 9.319 mt
Built	2011
Length over all	106,97 m
Breadth moulded	18,20 m
Draft summer	8,00 m
Speed	12 kn
GT	6.668
NT	3.625
Gear	2 x 60 mt (portside)



	<u>Cargohold</u>
Hatch / Hold	3 / 3
Bale	427.944 cbft

#### Class

RINA 100 A5 E3 MC E3 Aut  
Ice class E3 (Finnish 1A)

	<u>Container Capacity</u>
Container intake	132 TEU

#### 20' TEU      40' FEU

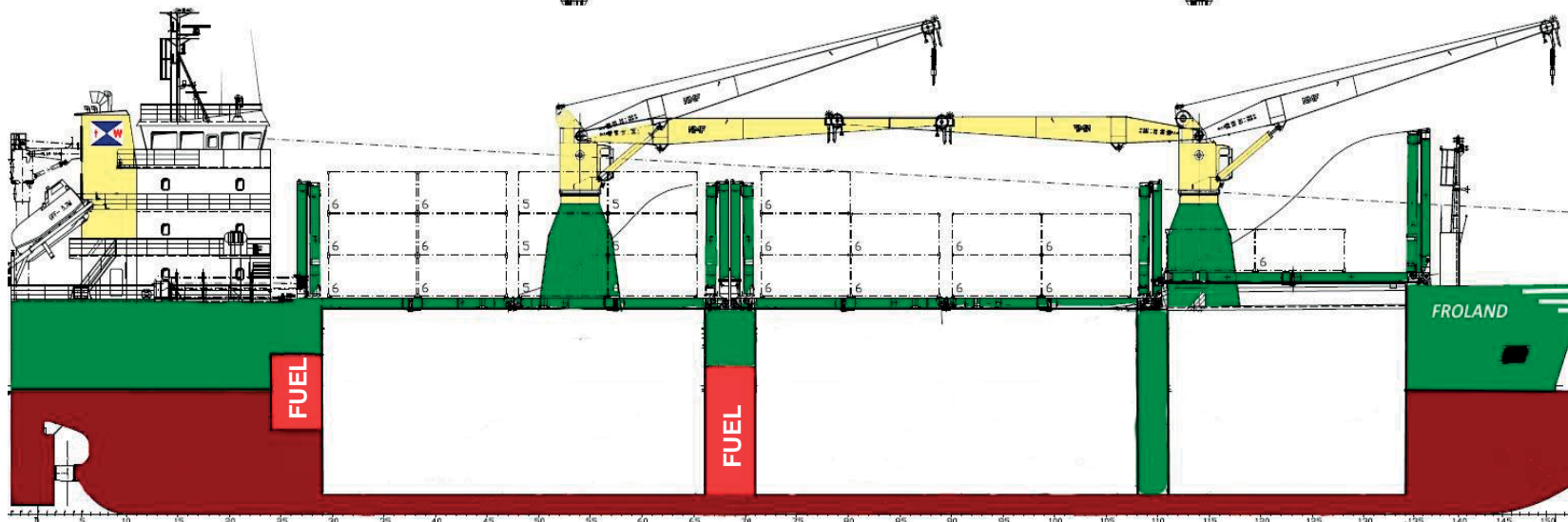
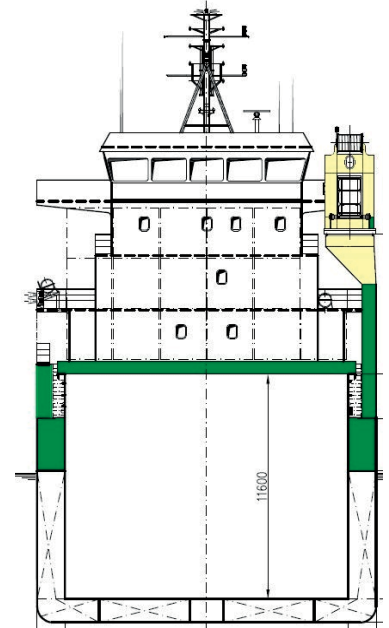
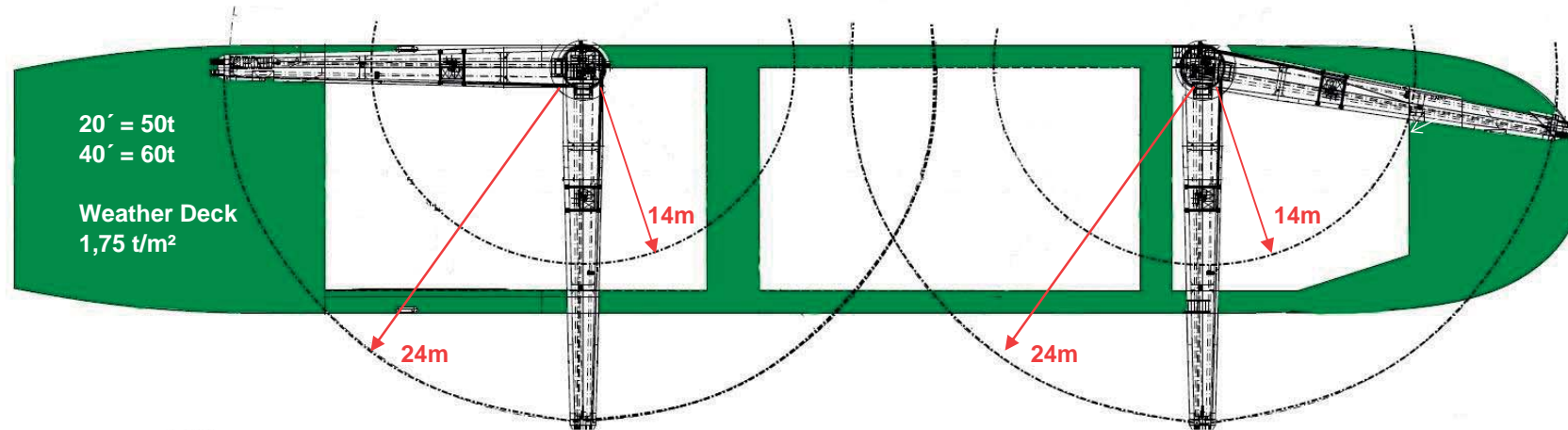
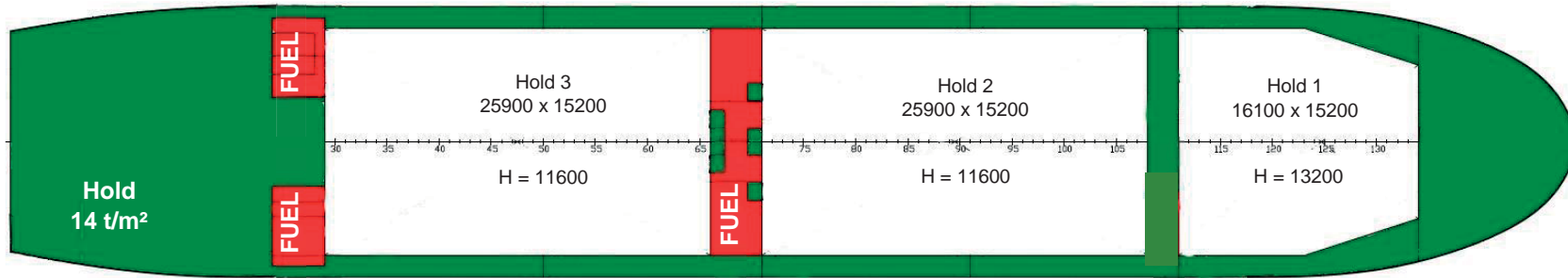
on deck	132 TEU	66 FEU
---------	---------	--------

#### Cranes

2 x NMF 60 mt / 14m  
Combined 120 mt

#### Engine

Fuel Specification	RMG 380
Main Engine	MaK 8M32C 3.840 kW
Auxiliary Engine	2 x MAN D2840LE301, 443 kW



VSL PARTICULARS	
LOA	106,97 m
LPP	103,29 m
B	18,20 m
Depth	10,50 m
D summer	8,000 m
D winter	7,833 m
Air Draft	abt. 34,0 m
GRT / NRT	6668 / 3625
DWT	9319 mts
TEU/FEU	132 / 66 (Deck)
Crane SWL	35 mts (24m) 60 mts (14m)
Holds V	#1 = 2987,7 m³ #2 = 4566,6 m³ #3 = 4566,6 m³