

MV "FINNLAND"

DWAT	7.098 mt
Built	2006 (Aland 2007)
Length over all	117,00 m
Breadth moulded	16,50 m
Draft summer	6,30 m
Speed	12 kn
GT	5.257
NT	2.697
Gear	nil



Cargohold

Hatch / Hold	2 / 2
Bale	323.000 cbft

Class

DNV GL +100 A5 E3 G + MC E3 AUT
Equipped for carriage of containers
and heavy cargoes,
SOLAS II-2, Reg. 19
Ice class E3 (Finnish 1A)

Container Capacity

Container intake 324 TEU

20' TEU 40' FEU

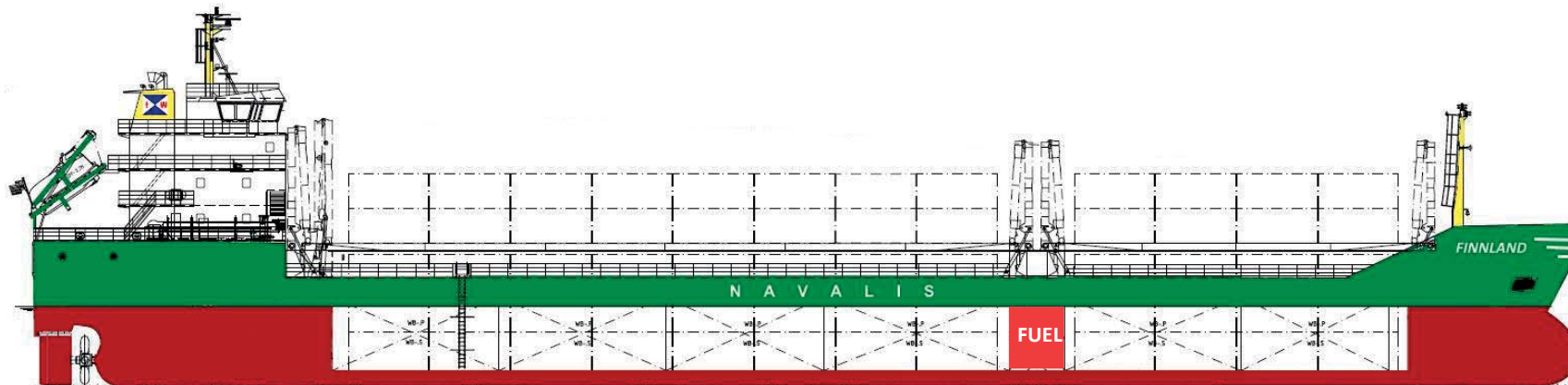
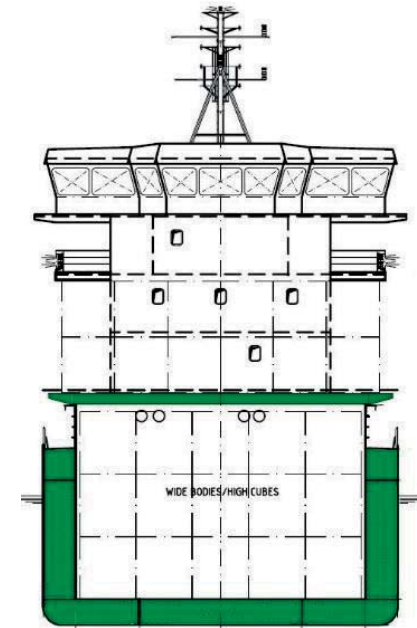
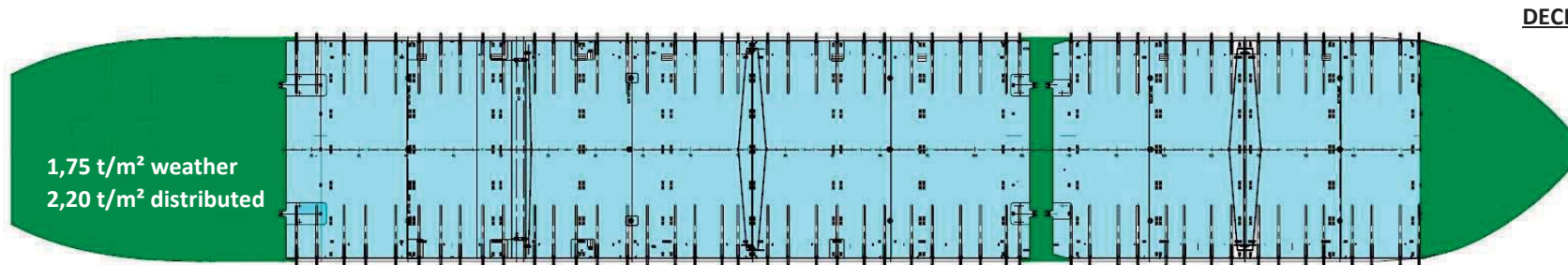
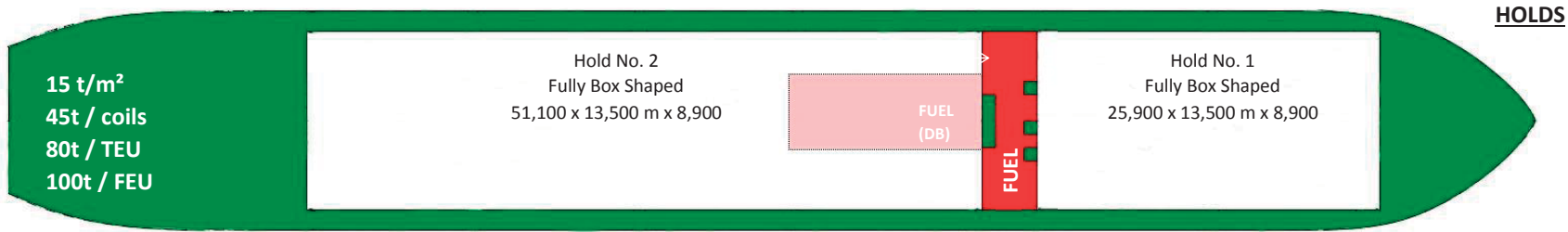
in hold 180 TEU 90 FEU

on deck 144 TEU 72 FEU

total hold + deck 324 TEU 162 FEU

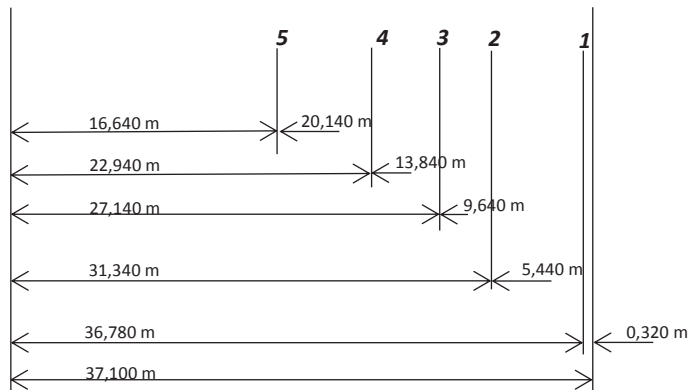
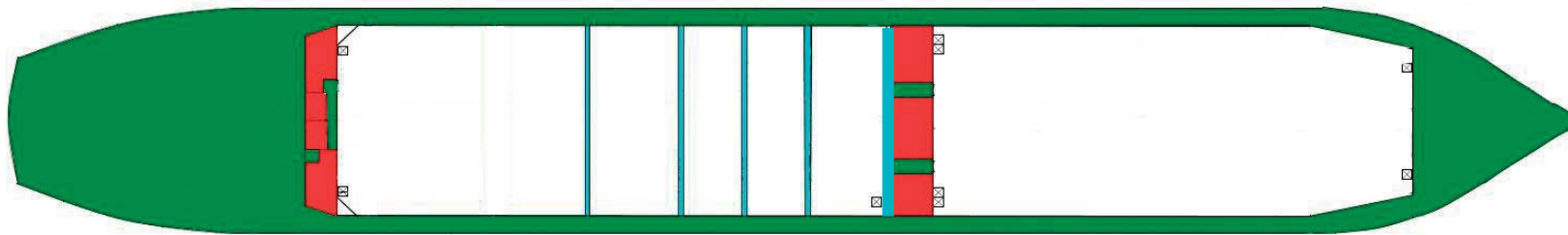
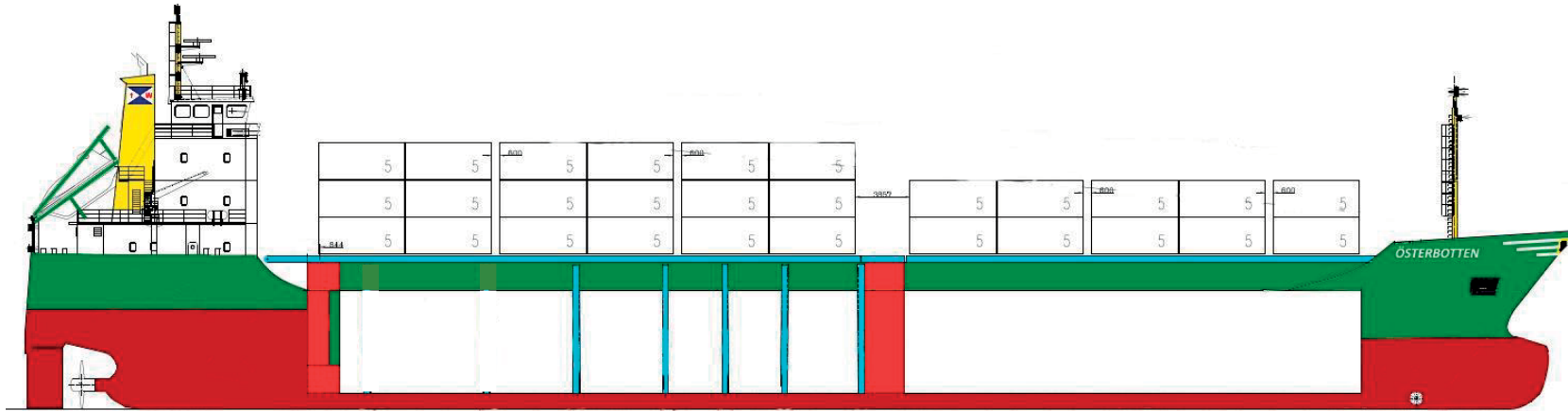
Engine

Fuel Specification	IFO 180 according ISO 8217
Main Engine	1 x MaK 8M32C MCR: 3.840 kW
Auxiliary Engine	2 x Caterpillar 3408 SR4, each 280 kW



Particulars	
LOA	117,02 m
LPP	113,03 m
B	16,50 m
Depth	8,20 m
D s	6,000 m
D w	5,875 m
GRT / NRT	5257 / 2697
DWT	7055 mts

BULKHEAD STOWAGE



Bulkhead	Permanent @ hold no. 2
Hold No. 1 Intakes	
No bulkhead	3608 m ³
Hold No. 2 Intakes	
Pos. 1	4228 m ³
Pos. 2	622 m ³ / 3606 m ³
Pos. 3	1107 m ³ / 3122 m ³
Pos. 4	1591 m ³ / 2637 m ³
Pos. 5	2318 m ³ / 1910 m ³