

|                 |          |
|-----------------|----------|
| DWAT            | 5.880 mt |
| Built           | 2002     |
| Length over all | 109,20 m |
| Breadth moulded | 15,00 m  |
| Draft summer    | 6,25 m   |
| Speed           | 12,5 kn  |
| GT              | 4.185    |
| NT              | 2.166    |
| Gear            | N/A      |



### Cargohold

|              |              |
|--------------|--------------|
| Hatch / Hold | 2 / 2        |
| Bale         | 277.000 cbft |

### Class

DNV GL +100 A5 E3 MC E3 AUT  
 Multipurpose, Dry Cargo ship  
 strengthened for heavy cargo,  
 equipped for carriage of containers  
 Ice class E3 (Finnish 1A)

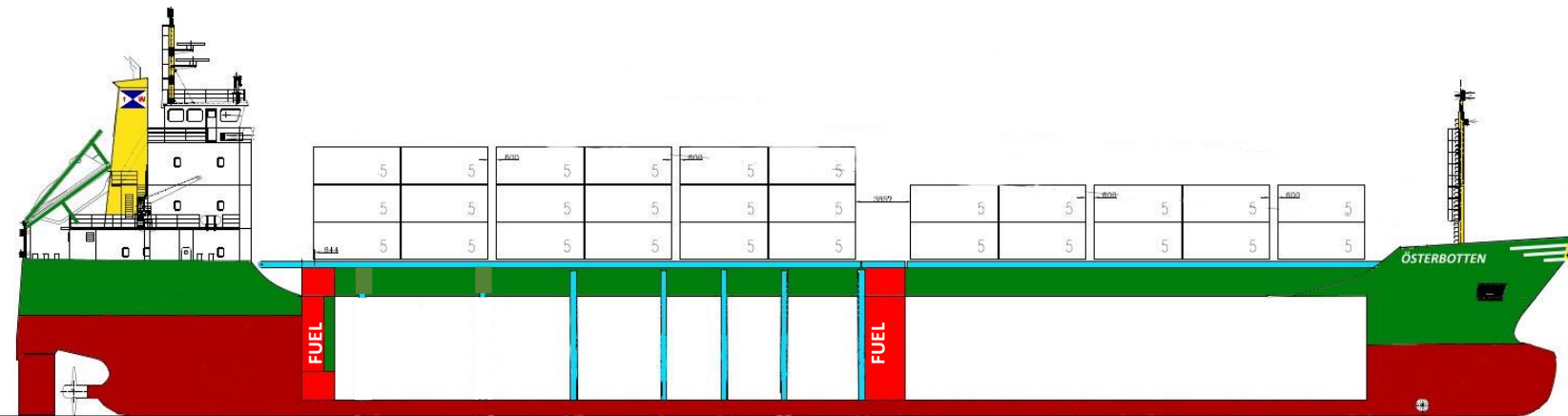
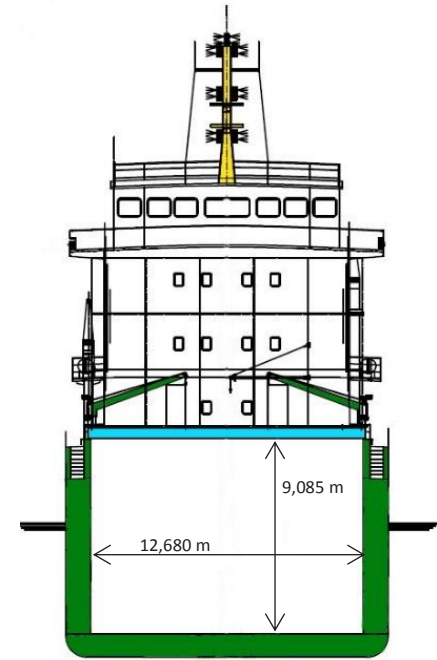
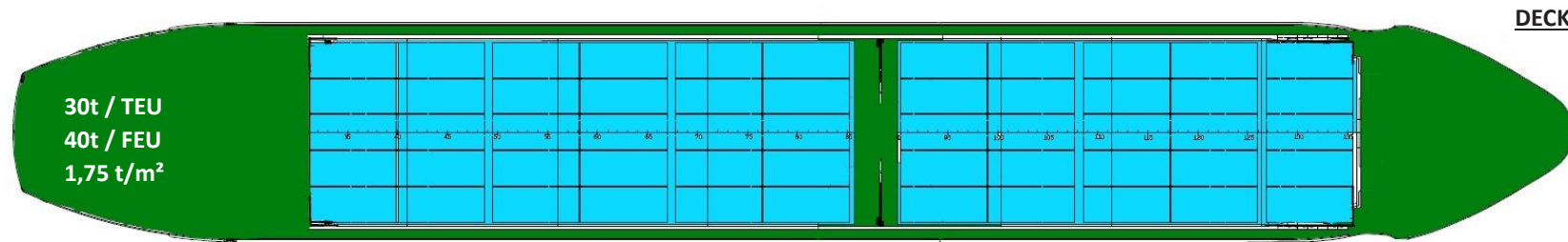
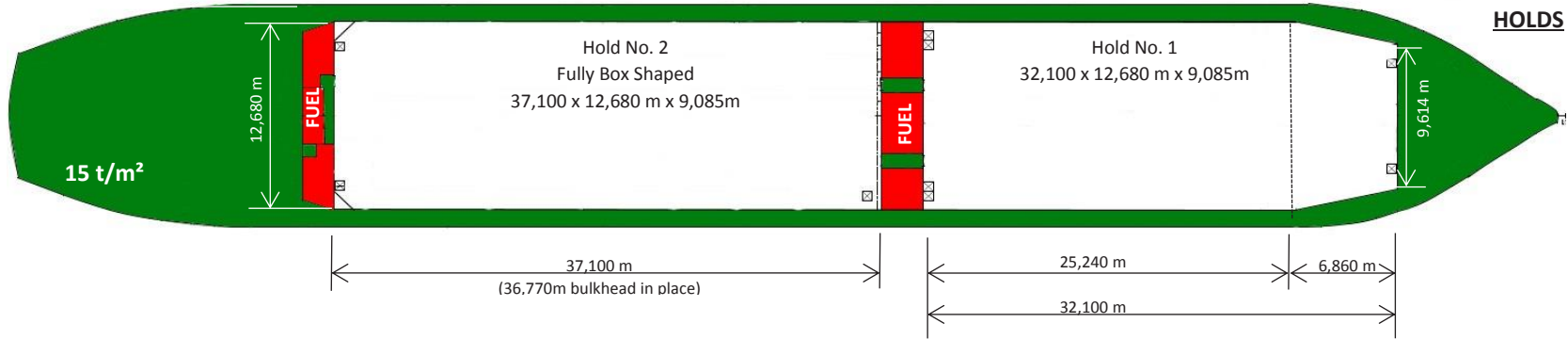
### Container Capacity

|                  |         |
|------------------|---------|
| Container intake | 322 TEU |
| 14 to homogenous | 245 TEU |

|                          | 20' TEU        | 40' FEU        |
|--------------------------|----------------|----------------|
| in hold                  | 156 TEU        | 60 FEU         |
| on deck                  | 166 TEU        | 78 FEU         |
| <b>total hold + deck</b> | <b>322 TEU</b> | <b>138 FEU</b> |

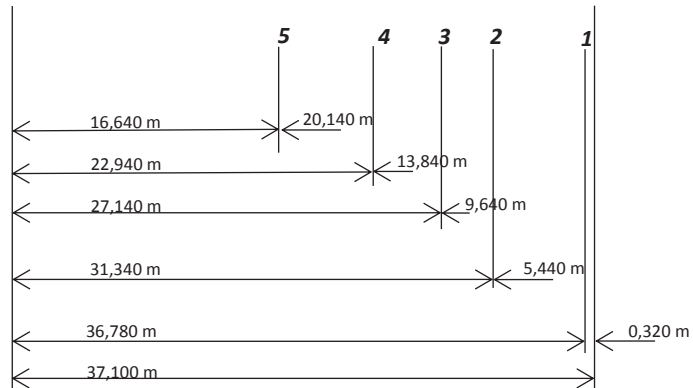
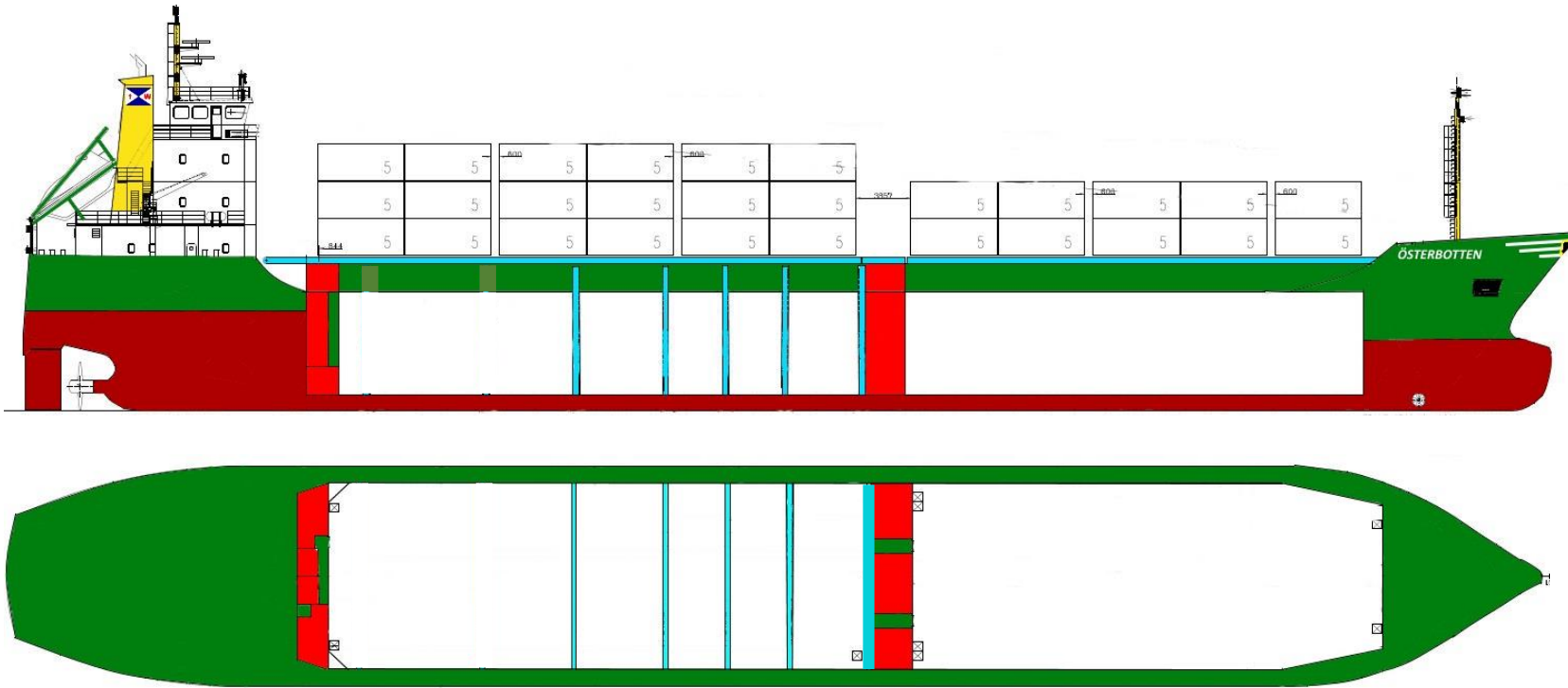
### Engine

|                    |                                       |
|--------------------|---------------------------------------|
| Fuel Specification | IFO 380 according ISO 8217            |
| Main Engine        | 1x MaK 6M32C, 2.880 kW                |
| Auxiliary Engine   | 2x Caterpillar 3306 DITA, each 412 kW |



| MV „ÖSTERBOTTEN“<br>(IMO 9247120) |             |
|-----------------------------------|-------------|
| LOA                               | 109,19 m    |
| LPP                               | 102,46 m    |
| B                                 | 15,00 m     |
| Depth                             | 8,30 m      |
| D s                               | 6,190 m     |
| D w                               | 6,061 m     |
| GRT / NRT                         | 4185 / 2168 |
| DWT                               | 5880 mts    |

## BULKHEAD STOWAGE



|                           |   |
|---------------------------|---|
| Bulkhead                  | Permanent @ hold no. 2                    |
| <b>Hold No. 1 Intakes</b> |   |
| No bulkhead               | 3608 m <sup>3</sup>                       |
| <b>Hold No. 2 Intakes</b> |   |
| Pos. 1                    | 4228 m <sup>3</sup>                       |
| Pos. 2                    | 622 m <sup>3</sup> / 3606 m <sup>3</sup>  |
| Pos. 3                    | 1107 m <sup>3</sup> / 3122 m <sup>3</sup> |
| Pos. 4                    | 1591 m <sup>3</sup> / 2637 m <sup>3</sup> |
| Pos. 5                    | 2318 m <sup>3</sup> / 1910 m <sup>3</sup> |