

DWAT	7.850 mt
Built	2006
Length over all	118,55 m
Breadth moulded	15,43 m
Draft summer	7,05 m
Speed	11 kn
GT	4.967
NT	2.631
Gear	N/A



Cargohold

Hatch / Hold	2 / 2
	Hydraulic operated folding covers
Bale	330.000 cbft

Class

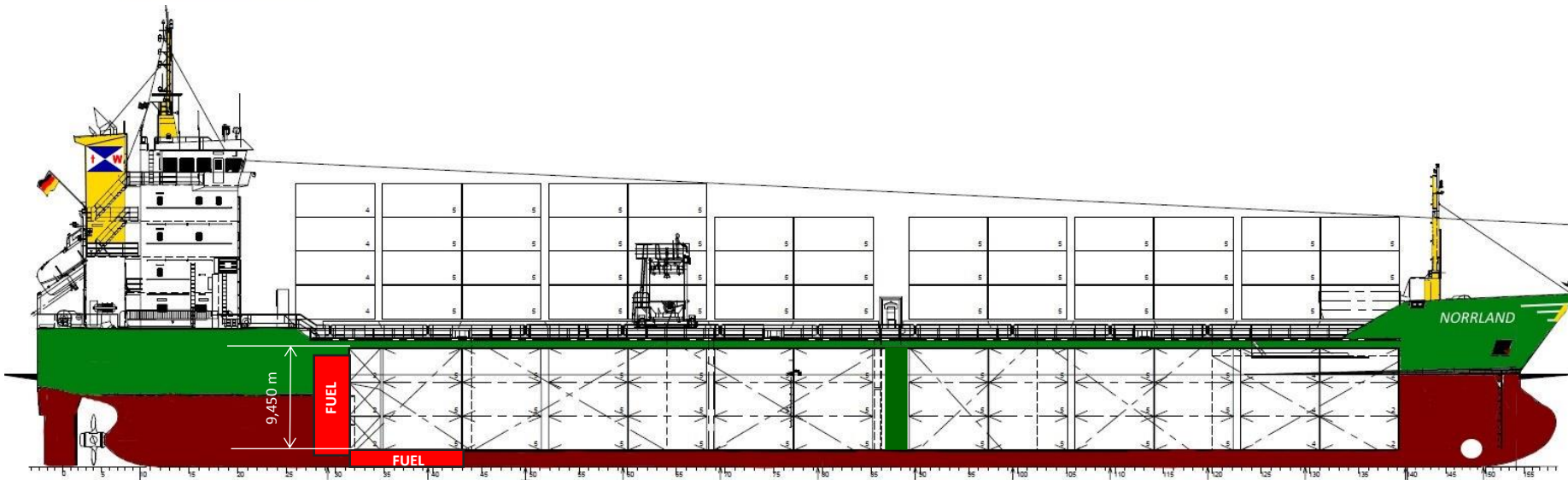
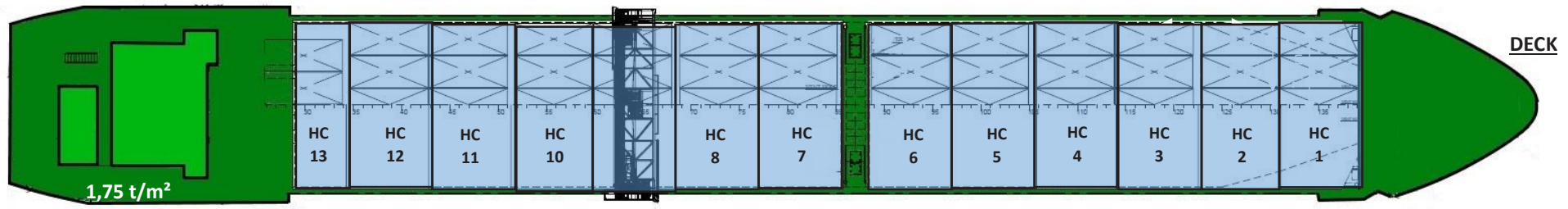
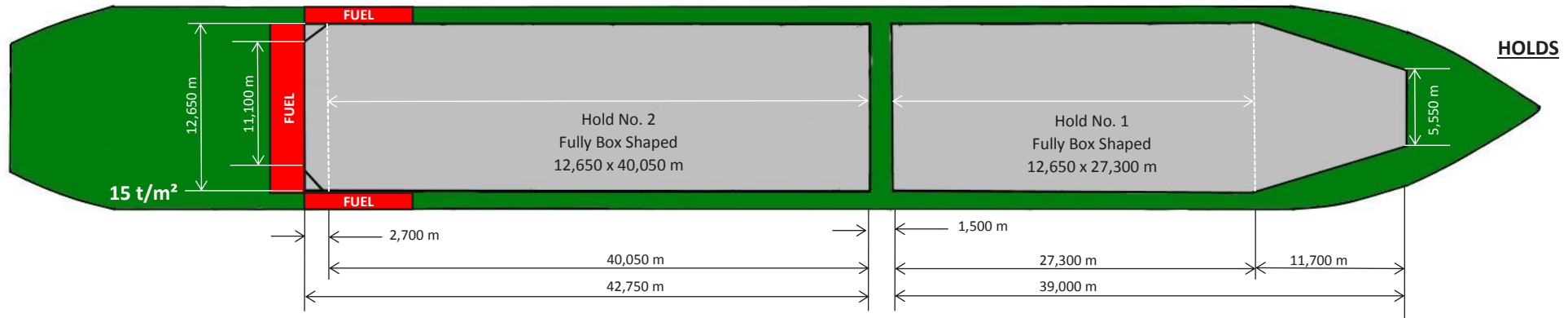
RINA 100 A5 E3 + MC E3 AUT-UMS
strengthened for heavy cargo
equipped for carriage of containers;
unrestricted navigation
Ice class E3 (Finnish 1A)

Container Capacity

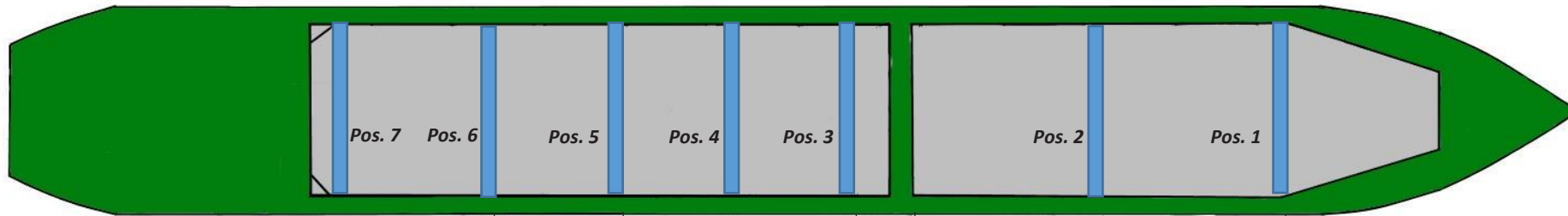
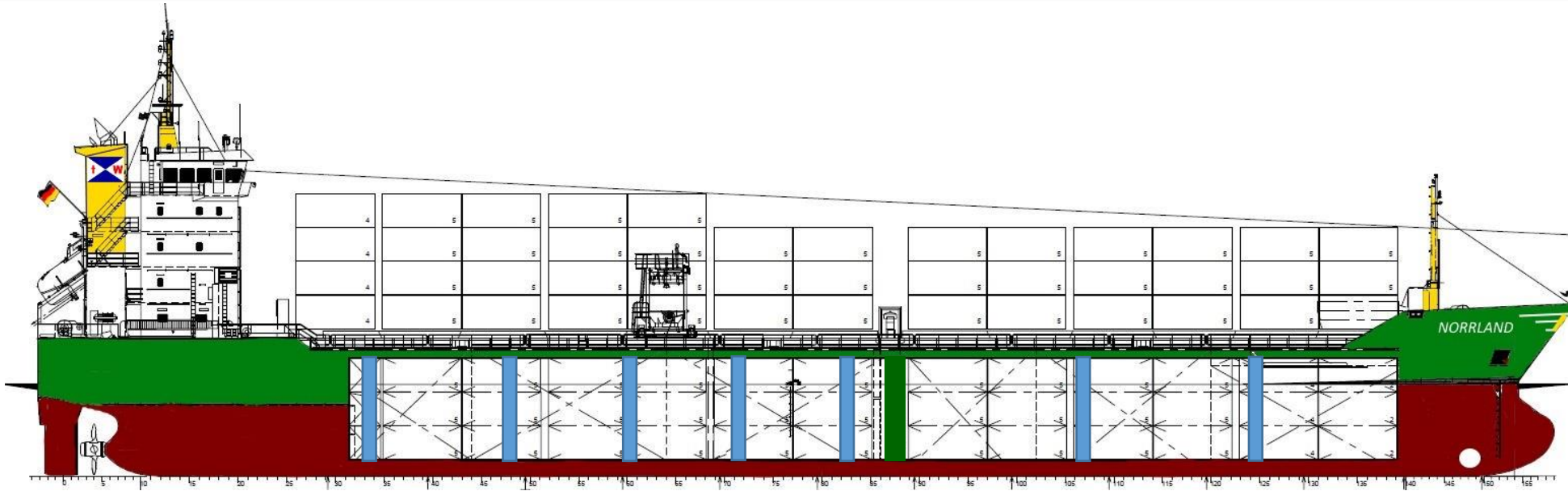
Container intake	390 TEU	
14mts homogenous	245 TEU	
	20' TEU	40' FEU
in hold	174 TEU	84 FEU
on deck	216 TEU	100 FEU
total hold + deck	390 TEU	184 FEU

Engine

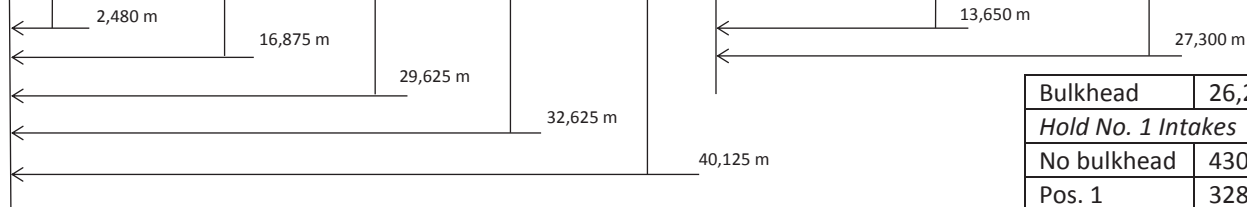
Fuel Specification	IFO 180 according ISO 8217
Main Engine	1 x MaK 8M32C, 3.840 kW
Auxiliary Engine	2 x Cummins N14D(M), each 260 kW



MV „NORRLAND“ (IMO 9358278)	
LOA	118,55 m
LPP	111,85 m
B	15,43 m
Depth	8,45 m
D s	7,050 m
D w	6,903 m
GRT / NRT	4967 / 2631
DWT	7890 mts



**BULKHEAD
STOWAGE**



Bulkhead	26,299 m ³ (each) → 52,598 m ³ (total)
<i>Hold No. 1 Intakes</i>	
No bulkhead	4305,983 m ³
Pos. 1	3289,796 m ³ / 1016,191 m ³
Pos. 2	2736,998 m ³ / 1568,989 m ³
<i>Hold No. 2 Intakes</i>	
No bulkhead	5108,625 m ³
Pos. 3	4794,808 m ³ / 252,877 m ³
Pos. 4	3898,243 m ³ / 1149,442 m ³
Pos. 5	3539,617 m ³ / 1508,068 m ³
Pos. 6	2015,456 m ³ / 3032,229 m ³
Pos. 7	294,649 m ³ / 4753,036 m ³