

MV Västerbotten

Sister Vessel: MV Lappland, MV Nyland, MV Halland



General

Built	2008 + 2009
Length over all	119,30 m
Breadth moulded	16,50 m
max. draught	6,28 m / w:5,6 m
max. DWAT	6.800 mt / w:5.650 mt
Speed	12,0 knots
GT	5.335 London Rules
NT	2.566 London Rules

Cargohold

Hatch / Hold	2 / 2
Bale	304.000 cbft

Class

Germanischer Lloyd + 100 A 5 E3
G IW BWM-F + MC AUT E3 Solas II-2, Reg. 19
Multi-Purpose Dry Cargo Vessel

Engine

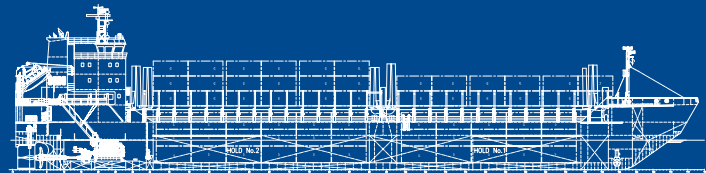
Fuel Specification	ISO 8217:2010 or 2005 (e)
Main Engine	MAN 6L32/40 mcr 3000kw
Auxiliary Engine	Volvo Penta D9 MG 227 kW

Cargo / Container Capacity

Container intake	331 TEU	
Container intake	14 mt homogenous	
	in hold	40' FEU + 20' TEU
	total in hold	159
	on deck	78 + 8
	total on deck	172
	total hold and deck	331
		153 + 17

Container Pointload

on tanktop	28 mt / 48 mt per TEU / FEU
on hatchcovers	45 mt / 60 mt per TEU / FEU



all details about and not to be used for charter parties