

MV Österbotten



General

Built	2002
Length over all	109,15 m
Breadth moulded	15,00 m
max. draught	6,25 m
max. DWAT	5.880 mt
Speed	12,5 knots
GT	4.185 London Rules
NT	2.166 London Rules

Cargohold

Hatch / Hold	2 / 2
Bale	280.000 cbft

Class

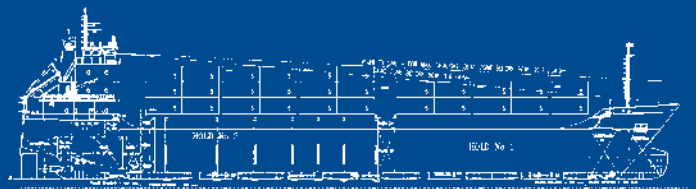
Germanischer Lloyd
100 A5 E3, MC E3 AUT

Engine

Fuel Specification	IFO 380 acc ISO 8217
Main Engine	MaK 6M32, 2.880 kW
Auxiliary Engine	2x Caterpillar 3306 DITA each 412 kw

Container Capacity

Container intake	313 TEU
Container intake 14 mt homogenous	240 TEU
in hold	20' TEU
total in hold	147
on deck	
total on deck	166
total in hold+deck	313



all details about and not to be used for charter parties