

MV Montego

Sister Vessel: MV Magari, MV Montana



General

Built	Montego 2008, Magari 2007, Montana 2007
Length over all	161,30 m
Breadth moulded	25 m
max. draught	9,50 m
max. DWAT	17.350 mt
Speed	20 knots
GT	16.162 London Rules
NT	6.128 London Rules

Cargohold

Hatch / Hold 7 / 4

Class MONTEGO

BUREU VERITAS, I Hull, Mach, Containership
Unrestricted navigation AUT-UMS;
MON-SHAFT; REF-CONT(E);ICE; INWATERSURWAY

Class MAGARI

Germanischer Lloyd
100 A5 E IW DG Container Ship
MC E AUT CM-PS

Class MONTANA

Germanischer Lloyd
100 A5 E
Container Ship
IW SOLAS-II-2, Reg.19 C2P52
+ MC E AUT

Cranes

2 x Mac Gregor
SWL 45 to / 40 to outreach 3,9 m / 3,5 m
SWL 45 to / 40 to outreach 28 m / 34 m

Engine

Consumption	52 mt / 20 knots
Port Consumption	2,0 mt / day
Fuel Specification	RMG HFO 380 according ISO 8217
Main Engine	HHM MAN B&W 8S50MC-C-Mk7, 12.640 kW
Auxiliary Engine	MAN B&W 2 x 8L21 / 31 x 900 rpm each 1600 kW 2 x 6L21 / 31 x 900 rpm each 1200 kW

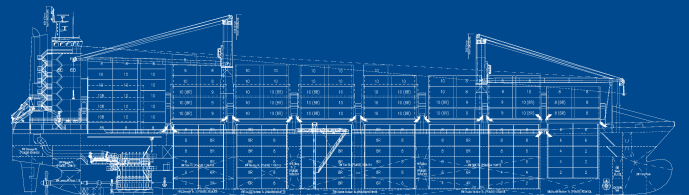
Container Pointload

on tanktop	120 to / 150 to per 20' / 40' stack
on hatchcover	70 to / 120 to per 20' / 40' stack

Container Capacity

Container intake	1.294 TEU + 22 FEU
Container intake 14 to homogenous	925 TEU

	in hold	20' TEU	40' FEU	+ 20' TEU
total in hold		556	274	+ 8
on deck				
total on deck		738 TEU + 22 FEU	342	+ 79
total in hold+deck		1.294 TEU + 22 FEU	616	+ 87



all details about and not to be used for charter parties