

MV Avera



General

Built	2003
Length over all	134,44 m
Breadth moulded	22,50 m
max. draught	8,71 m
max. DWAT	11.190 mt
Speed	18 knots
GT	9.990 London Rules
NT	6.006 London Rules

Cargohold

Hatch / Hold	2 / 4 (hold 3 + hold 4 - open top)
--------------	------------------------------------

Class

DNVGL +100 A5
 IW SOLAS II-2, Reg. 54 + MC AUT
 Containership (open top)

Cranes

2 x 45 mt

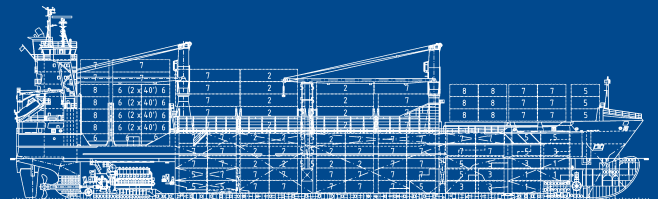
Engine

Fuel Specification	RMG 380
Main Engine	MaK 9M43 8.400 kW
Auxiliary Engine	2 x Catapillar 3508B each 856 kW

Container Capacity

Container intake	862 TEU
Container intake 14 mt homogenous	595 TEU

	20' TEU	40' FEU + 20' TEU
in hold	601	295 11
on deck	261	97 67
total hold+deck	862 TEU	392 FEU 78 TEU



all details about and not to be used for charter parties