

MV Antala



General

Built	2002
Length over all	154,52 m
Breadth moulded	24,50 m
max. draught	9,00 m
max. DWAT	17.183 mt
Speed	19 knots
GT	14.062 London Rules
NT	4.958 London Rules

Cargohold

Hatch / Hold 7 / 4

Class

DNVGL +100 A5 E
SOLAS II-2, Reg. 54, MC E AUT
CONTAINERVERSEL

Cranes

2 x Liebherr cbw 40
(abt. 45 mt with 26,50 m outreach)

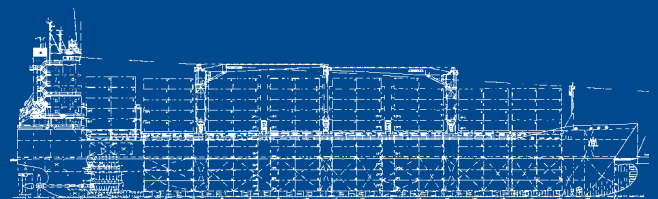
Engine

Fuel Specification	RMG 380
Main Engine	MAN B&W 7S50MC 11.060 kW
Auxiliary Engine	MAN B&W 6L24/30 780 kW

Container Capacity

Container intake	1.157 TEU
Container intake 14 mt homogenous	909 TEU

	20' TEU	40' FEU	+ 20' TEU
in hold	476	230	16
on deck	681	312	57
total hold+deck	1.157 TEU	542 FEU	73 TEU



all details about and not to be used for charter parties